



February 2007

Daylight Saving time adjustment of FUJIFILM Medical Products

Starting in 2007, the United States is extending its implementation of Daylight Saving Time (DST) observance by 4 weeks. The Energy Policy Act of 2005 accomplished this by changing the start date for DST to the second Sunday of March (previously this was the first Sunday of April) and the ending date to the first Sunday in November (previously this was on the last Sunday of October). For 2007, this means DST will start in March 11, 2007 and end on November 4, 2007.

For a complete status of the effect on Microsoft operating systems please refer to: http://support.microsoft.com/gp/cp_dst.

COMPUTED RADIOGRAPHY

Fuji is committed to providing the needed information to help our customers make the necessary adjustments to update the effected products using Microsoft operating systems. After consulting with IT experts, it was determined that the optimum method of implementing these changes in a rapid manner is to address the issue in two phases.

To address the immediate issue of making a manual adjustment to workstations on March 11th, please note the attached instructions at the end of this document that provide an overview of the steps to implement the changes within the Fuji CR workstations. These instructions are segmented by the version of Microsoft windows.

In a second phase, a CD will be provided that will make the necessary changes to the registry which will provide automatic clock changes in future time changes. There are several versions of Microsoft Windows in use, some of which Microsoft is no longer supporting with patches. It is the intention of FUJIFILM Medical to develop automatic update software wherever possible for the second phase initiative to help facilities make the needed long term adjustment. A separate communication will be made in regards to the availability of this CD.

For the FCR QA Workstation 771, this system uses Windows NT which is no longer supported by Microsoft. More recent versions are supplied with Windows XP. Instructions are provided below.

PRINTERS

The Fuji FN-PS-551 Print server utilizes Windows NT, which Microsoft is no longer supporting. In newer systems the print server was supplied with Windows XP. The official correction for this system is to manually adjust the time, and disable the automatic change in the dialog box. Instructions are provided below.

Fuji printers are not dependent on an internal time stamp. As such manual adjustment of the printers is optional.

SYNAPSE

Fujifilm's Synapse PACS is a computer-based enterprise application that stores dates and times received from multiple data sources including imaging modalities, interfaced healthcare IT systems and from user actions within the system itself. Synapse customers should take the necessary steps to ensure date and time is consistent within their environment. Modalities and interfaced systems should be patched or updated with the correct time to ensure consistent timing – contact 3rd party vendors or suppliers if there is any question on how to accomplish this. All computers that are or may run the Synapse client application or server components should also be updated.

All Synapse computers run on Microsoft Windows® operating systems and obtain date and time from the host operating system. To help customers deal with this new implementation of DST, Microsoft has released an automated patch for currently supported operating systems (Windows XP and Windows 2003 Server) and registry fix instructions for operating systems in extended support (Windows 2000 Server and Professional). There are no published instructions for operating systems not currently covered under standard or extended support from Microsoft.

Microsoft has published a comprehensive tool, the Daylight Saving Time Help and Support Center, to assist users in updating supported systems. This can be found at http://support.microsoft.com/gp/cp_dst.

Download links and implementation instructions for all versions of Windows XP Service Pack 2 and all versions of Windows 2003 Server can be found here: <http://support.microsoft.com/kb/931836/>.

If you have specific questions regarding this, please contact FUJIFILM Medical Technical Assistance Center at: 800-272-8465.

Computed Radiography \ Laser Imager Device Updating

Identify what version of Microsoft Windows you are running on your computer:

1. Click **Start**, point to **Settings**, and then click **Control Panel**.
2. In Control Panel, double-click **System**.
3. Click the **General** tab. The name of the current version of your Windows software is displayed on this tab.

Once you've determined which version you are running, follow the instructions below:

Permanent solutions offered by Microsoft on the Windows XP Operating System.

Systems with Windows XP Service Pack 2 – Go to the Microsoft Update Webpage - <http://update.microsoft.com/microsoftupdate> and apply the Daylight Savings Time Patch for Windows XP., or <http://support.microsoft.com/kb/931836/en-us> to download the patch directly without going through the Microsoft Update.

Systems with Windows XP Service Pack 1 – Go to the Microsoft Update Webpage - <http://www.microsoft.com/windowsxp/sp2/default.mspx> to apply the update to Windows XP Service Pack 2. The instructions for Systems with Windows XP Service Pack 2, directly above, can then be followed to update the Daylight Savings Change.

For all other Computed Radiography and Laser Imagers Systems with Microsoft Operating Systems other than Microsoft XP, please follow the directions below for a temporary work around by FUJIFILM Medical System device type, or if you do not wish to go to the Microsoft Web Site to download Service Release 2 or the Daylight Savings Time Patch. If you have any questions on how to do these manual changes, please call the TECHNICAL ASSISTANCE CENTER at (800) 272-8465.

Flash IIP



(Used on Smart CR\FCR-5000\XG-5000\Clearview CS (*m*)\ Clearview1 (*m*), and Speed suite Products)

This section is intended to be used as a quick reference guide for editing the date and time of the Flash IIP Console to reflect the recently adopted change in daylight savings time.

Note: Some screen captures may differ in appearance depending on the Operating System in use.

Note: **The Smart CR (CR-IR 346) will run an update utility internally when this change takes place. It can be recognized as a beeping sound that will last 3 – 5 minutes. This is normal and the unit must not be turned off due to the fact that the software is being updated. Turning off the unit during this process will corrupt the software if the unit is shut down and will require an billable on-site service call.**

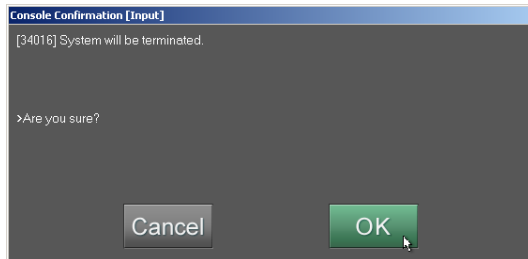
1. **Quitting the IIP application.**

1. From the FlashIIP application screen, select either the  or  icon at the upper right corner depending on the software version of your FlashIIP Console.

2. While holding down the “Shift” key on the keyboard, Select “Shutdown”

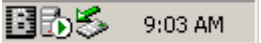


3. At the following screen select "OK" while continuing to hold the “Shift” key.

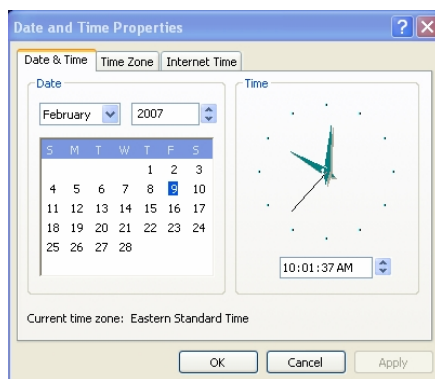


4. When the FlashIIP Console returns to the Windows desktop, release the “shift” key.

2. Editing the date and time.

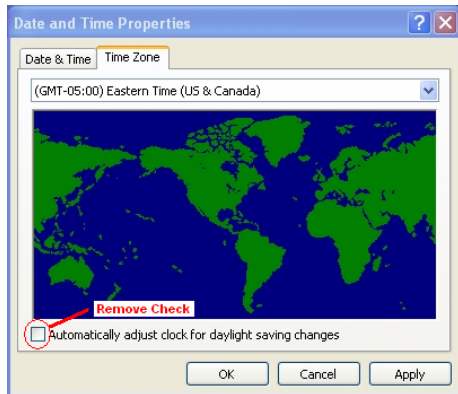
1. From the Windows desktop, Double click the time of your PC located at the bottom right hand corner  9:03 AM.


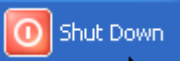
2. The Date and Time Properties window will appear.



3. On the Date and Time tab shown above, verify that the date and time are correct to reflect the newly adopted daylight savings time and select [Apply].

4. On the Time Zone tab of the Date and Time Properties window, remove the checkmark from “Automatically adjust clock for daylight savings changes” and select [Apply], then [OK].



5. Once you have returned to the Windows desktop, Restart the PC by selecting  then  then Restart as shown below.



6. The Flash IIP Console will then restart and the newly adopted daylight savings time will have been updated.

QA-771 Workstation

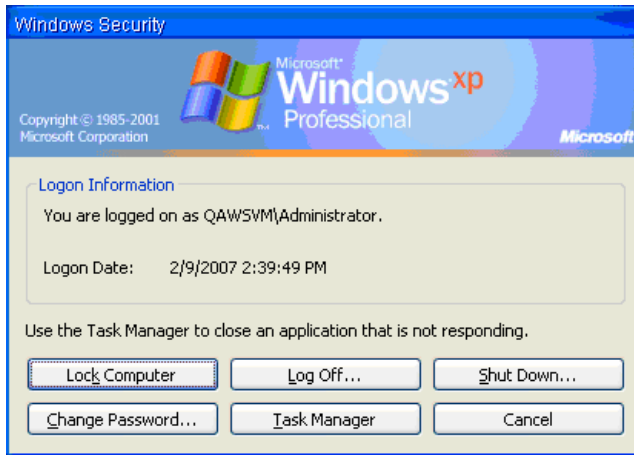
(Used with FCR-5000 Systems and other FUJI CR Readers)

This section is intended to be used as a quick reference guide for editing the date and time of the QA-WS 771 to reflect the recently adopted change in daylight savings time.

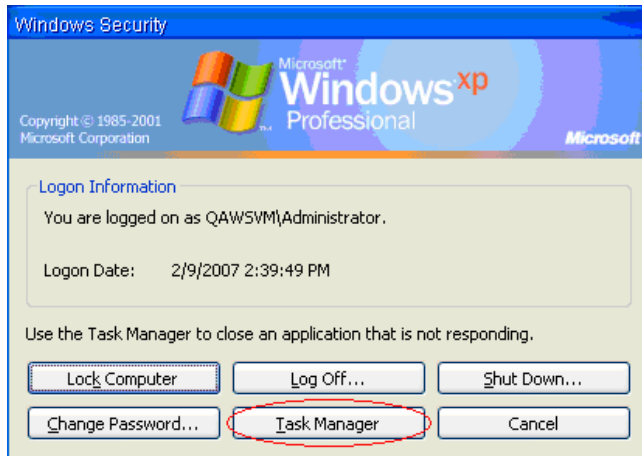
Note: Some screen captures may differ in appearance depending on the Operating System in use.

1. Exiting the QA-WS 771 Application

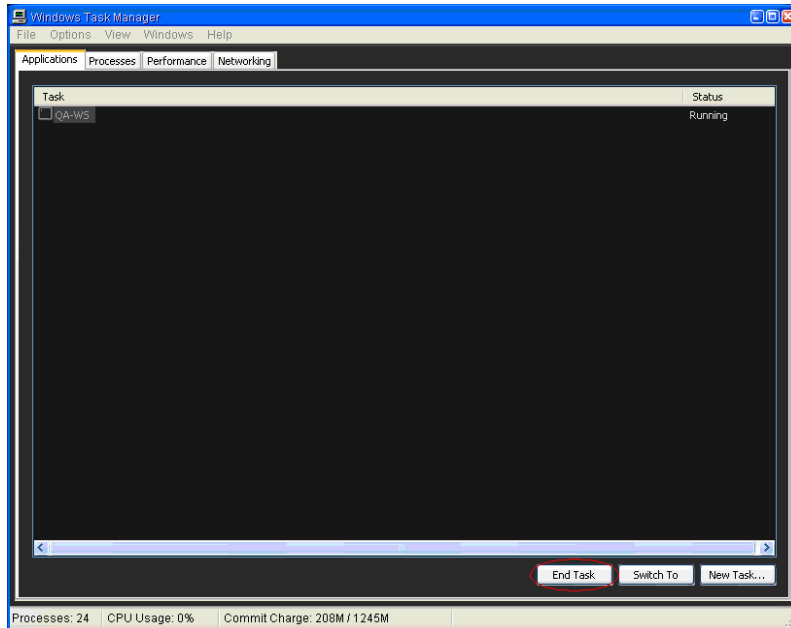
1. From the QA-WS 771 application screen, press the Ctrl, Alt and Delete buttons on the keyboard simultaneously. The “Windows Security” window will be displayed.



2. Using the mouse, select [Task Manager].

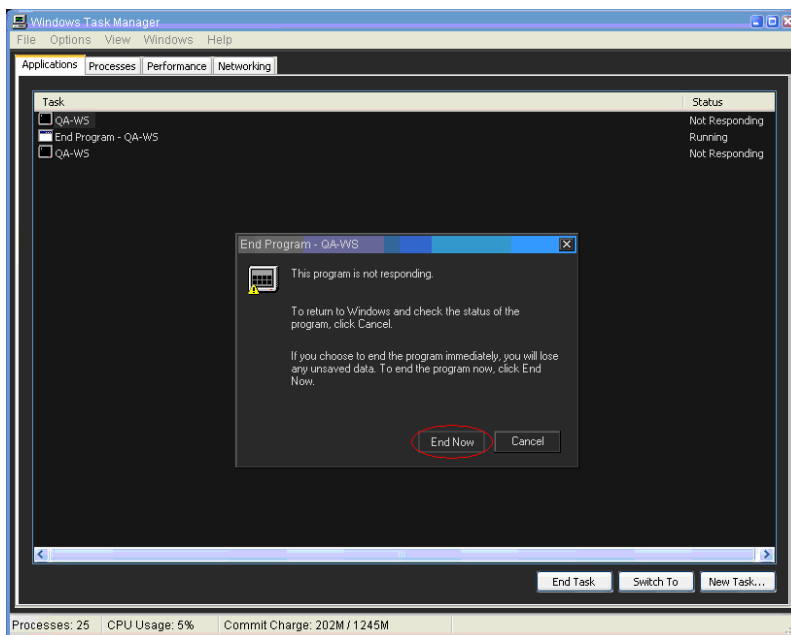


3. The Windows Task Manager Screen will now be displayed. Using the mouse, select [End Task].



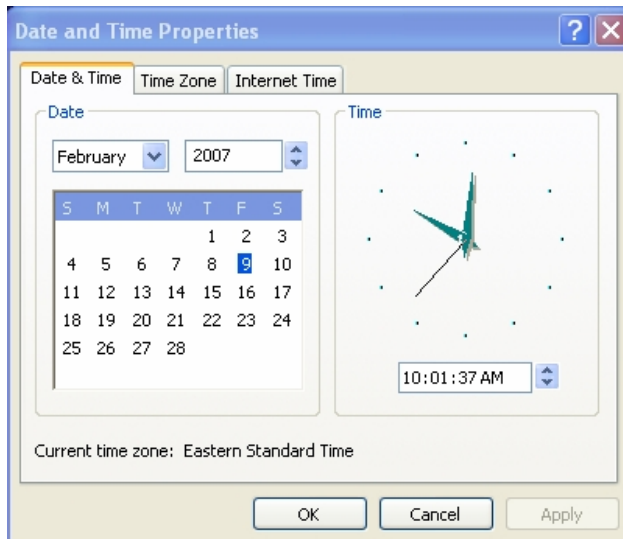
4. The End Program window will now be displayed. Using the mouse, select [End Now].

Note: The End Program window will be displayed for a short period of time, if [End Now] is not selected during this time the process must be repeated.

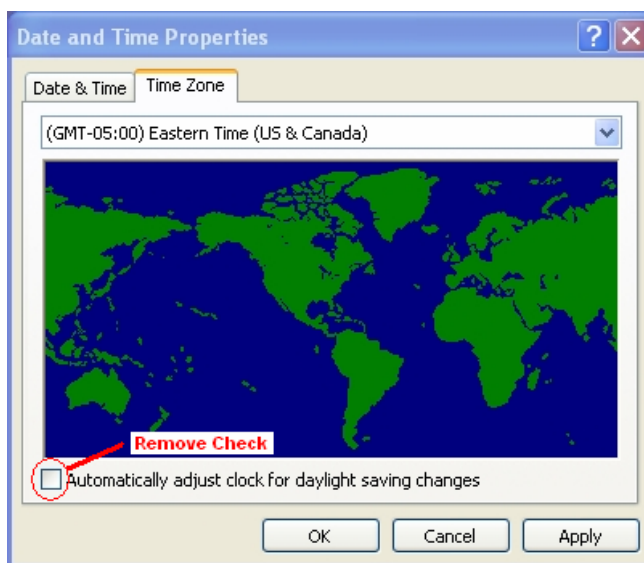


2. Verifying the Date and Time of the PC



1. Using the mouse, click on the clock **9:03 AM** located in the lower right corner of the screen.
2. **Note:** If the clock is not visible, the taskbar is hidden. Place the pointer in the lower right corner of the screen until the taskbar and clock appear.
3. The Date and Time Properties window will appear.



4. On the Date and Time tab of the Date and Time Properties window, set the date and time to reflect the newly adopted Daylight Savings Time and select [Apply].
5. On the Time Zone tab of the Date and Time Properties window, remove the checkmark from “Automatically adjust clock for daylight saving changes” and select [Apply], then [OK].



3. Restarting the QA-WS 771

7. Once you have returned to the Windows desktop, Restart the PC by selecting  then  then Restart as shown below.



8. The QA-WS 771 will then restart and the newly adopted daylight savings time has been updated.

PS-551 Print Server

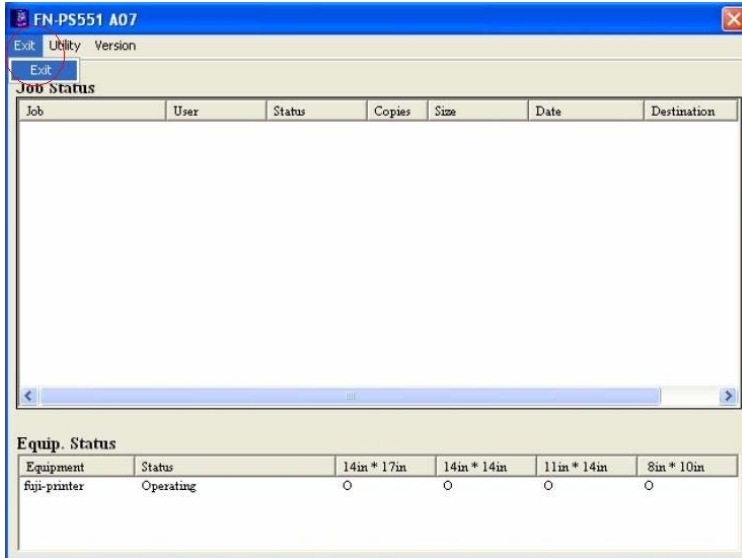
(Used on FM-DPL Laser Imagers and non-DryPix Imagers)

This section is intended to be used as a quick reference guide for editing the date and time of the FN-PS551 Print Server to reflect the recently adopted change in Daylight Savings Time.

Note: Some screen captures may differ in appearance depending on the Operating System in use.

1. Exiting the FN-PS 551 Application

1. Select [Exit] from the [Exit] menu located in the upper left corner of the application screen.

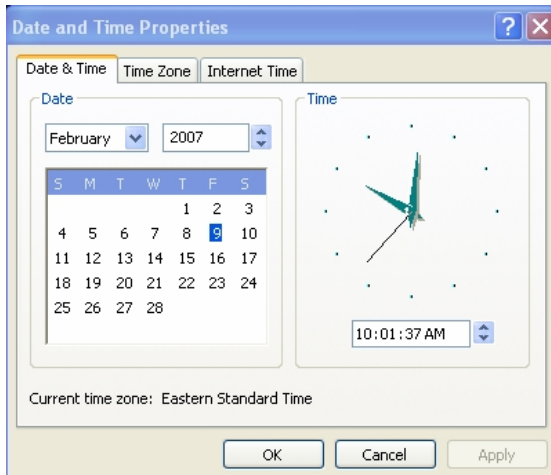


2. Verifying the Date and Time of the PC

2. Using the mouse, click on the clock **9:03 AM** located in the lower right corner of the screen.

Note: If the clock is not visible, the taskbar is hidden. Place the pointer in the lower right corner of the screen until the taskbar and clock appear.


3. The Date and Time Properties window will appear.



4. On the Date and Time tab of the Date and Time Properties window, set the date and time to reflect the newly adopted Daylight Savings Time and select [Apply].
5. On the Time Zone tab of the Date and Time Properties window, remove the checkmark from “Automatically adjust clock for daylight saving changes” and select [Apply], then [OK].



3. Re-Starting the FN-PS 551 Print Server

9. Once you have returned to the Windows desktop, Restart the PC by selecting  then



then Restart as shown below.




10. The FN-PS551 Print Server will then restart and the newly adopted daylight savings time has been updated.

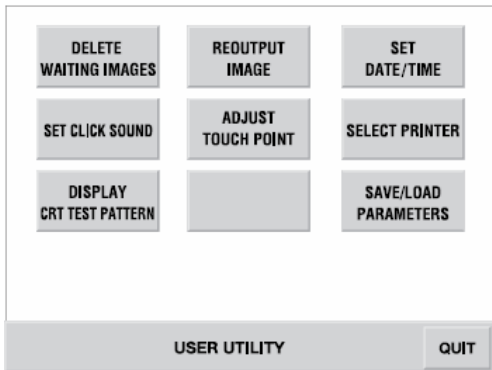
FCR-5000

(FCR-5000 (R) Family of Computed Radiography Readers)


This section is intended to be used as a quick reference guide for editing the date and time of the FCR5000 Series Reader to reflect the recently adopted change in daylight savings time. You will find these same instructions in your operators' manual (Page No?).

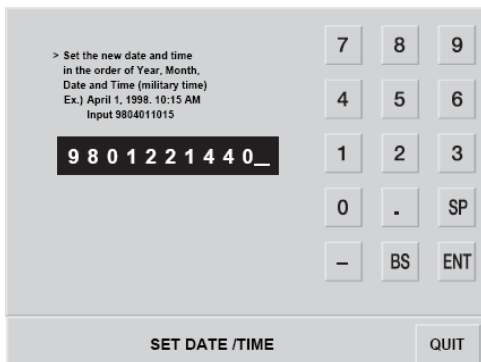
1. Entering User Utility.

11. From the FCR5000 main status display screen, touch the User Utility icon . A few seconds after "Please wait" has been displayed on the screen, the entire screen will change to User Utility mode.



2. Editing the date and time.

1. Once in User Utility, select the [Set Date/Time]  Icon.
2. The following date/time setting screen will be displayed. The current settings for date and time are displayed in the Black input column. Following the example on the screen, input the current date and time (as YYMMDDHHM'M') that reflect the newly adopted Daylights Saving Time (i.e. 1 hour ahead). After inputting the date and time, touch the ENT key to finalize it. When you wish to delete the displayed value, touch the BS (backspace) key and the cursor will move one character back.



12. When the modification has been accepted, "OK" will be displayed under the input column. Touch the **QUIT** key and return to the **User Utility Initial** screen. The device's internal clock will be set to the date and time that reflect the newly adopted daylight savings time.

> Set the new date and time
in the order of Year, Month,
Date and Time (military time)
Ex.) April 1, 1998, 10:15 AM
Input 9804011015

9 8 0 1 2 2 1 4 4 0

OK

7 8 9
4 5 6
1 2 3
0 . SP
- BS ENT


SET DATE /TIME QUIT

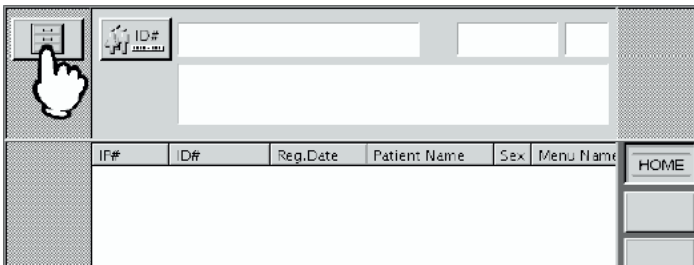
ID-T741 Data Input Terminal

(Used on FCR-5000 Family of Computed Radiography Readers)

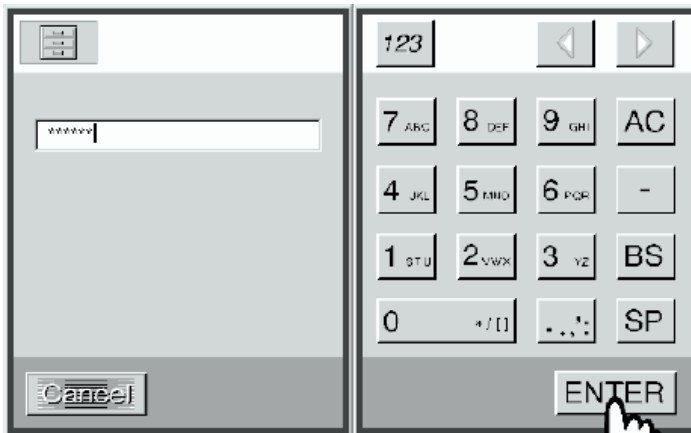
This section is intended to be used as a quick reference guide for editing the date and time of the IDT741 Console to reflect the recently adopted change in daylight savings time. You will find these same instructions in your operators' manual.

1. Entering User Utility.

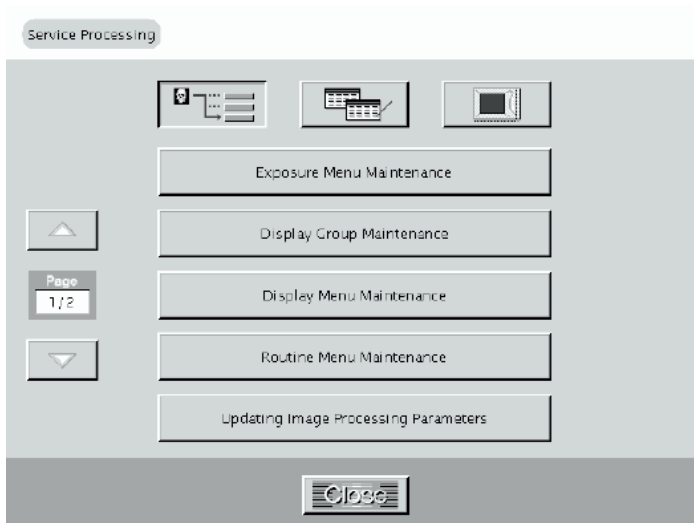
1. Press the User Utility Icon  in the Patient Information Input (HOME) Screen as shown below with the patient information input box and the software keyboard closed from the routine processing mode.



2. The password input box and the software keyboard will be displayed. The password for general users is already inputted in advance. To start the service mode, press [Enter].

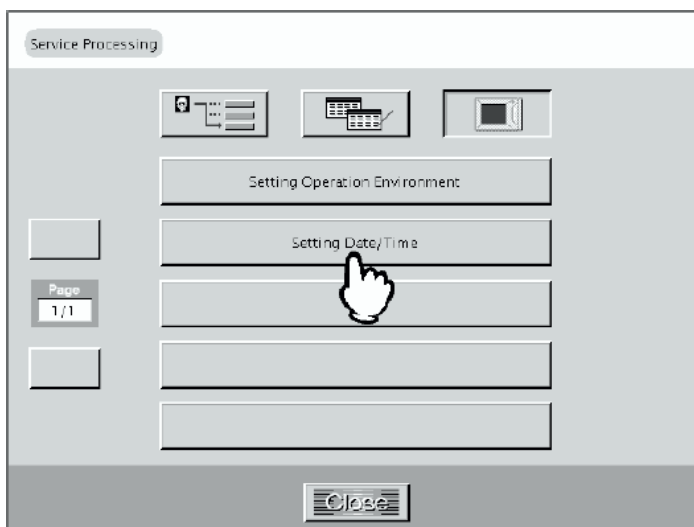


3. The service mode will then be activated as shown.

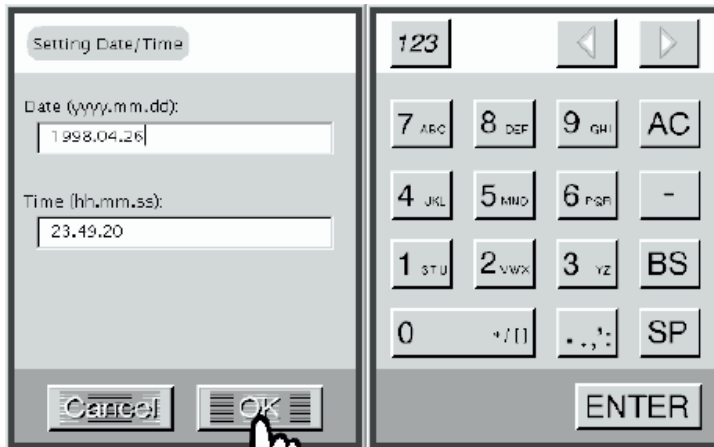


2. Editing the date and time.

1. Select the following Icon  to show the "Setting Date and Time" Tab




2. Select the “Setting Date/Time” tab The time/date setting box and the software keyboard will be displayed. Input the date and time to reflect the newly adopted Daylight Savings Time and press [OK].



3. The date and time is set, and the menu screen will return.

Note: If there is a difference of five minutes or more between the current time and the new time, an alert box will be displayed. To confirm the setting Press [Yes].

4. Select the Close Icon  to return to the Routine processing screen.
5. The IDT Console's internal clock will now be set to the date and time that reflect the newly adopted daylight savings time.